

DRINKS | Chestcooler

CHEST COOLER ► STANDARD TOP



GENERAL FEATURES

400 Lt. Chest cooler with standard top	•
White coated steel for external, embossed aluminium internally	•
Static Cooling	•
Manual Defrost	•
Defrost water drain	•
Foaming Agent Cyclopentane (60mm per side)	•
Removable Gasket	•
Interior LED light	•
Handle with lock	•
Digital thermometer display	•
Basket included (N.3 Pcs)	•
N.4 Castor (N.2 in the front with brake)	•
Energy efficiency class: D	•

TECHNICAL SPECIFICATIONS

External Dimensions (WxDxH mm)	1305x715x905
Internal Dimensions (WxDxH mm)	1180x510x682
Noise level	48.7 dB(A)
Consumption	2.1 kWh/24h
Capacity	400 L
Rated Power	120 W
Net Weight	64.5 Kg
Temperature	K1 (0°C~+7°C)
Gross Weight	84 Kg
Packaging dimensions (WxDxH mm)	1400x750x1005
Loading quantities 20'/40'/40'HQ	24/50/50

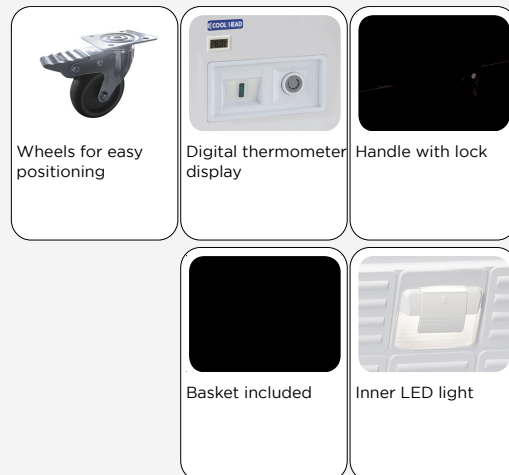
CERTIFICATION

CE RoHS

CFP 408



DETAILS



PRODUCT DIMENSIONS

